



**REGIONAL SPECIALISED METEOROLOGICAL CENTRE-TROPICAL CYCLONES, NEW DELHI**  
**TROPICAL WEATHER OUTLOOK**

**DEMS-RSMC TROPICAL CYCLONES NEW DELHI DATED 03.01.2024**

**TROPICAL WEATHER OUTLOOK FOR NORTH INDIAN OCEAN (THE BAY OF BENGAL AND THE ARABIAN SEA) VALID FOR NEXT 168 HOURS ISSUED AT 0600 UTC OF 03.01.2024 BASED ON 0300 UTC OF 03.01.2024.**

**BAY OF BENGAL:**

YESTERDAY'S CYCLONIC CIRCULATION OVER SOUTHWEST BAY OF BENGAL OFF SOUTH SRILANKA COAST EXTENDING UPTO MID-TROPOSPHERIC LEVELS LAY OVER THE SAME REGION AT 0300 UTC OF TODAY, 3RD JANUARY, 2024.

SCATTERED LOW AND MEDIUM CLOUDS WITH EMBEDDED INTENSE TO VERY INTENSE CONVECTION LAY OVER SOUTH BAY OF BENGAL & MODERATE TO INTENSE CONVECTION OVER SOUTH ANDAMAN SEA. SCATTERED LOW AND MEDIUM CLOUDS WITH EMBEDDED ISOLATED WEAK CONVECTION OVER CENTRAL BAY OF BENGAL.

**\*PROBABILITY OF CYCLOGENESIS (FORMATION OF DEPRESSION) DURING NEXT 168 HRS:**

24 HOURS	24-48 HOURS	48-72 HOURS	72-96 HOURS	96-120 HOURS	120-144 HOURS	144-168 HOURS
NIL	NIL	NIL	NIL	NIL	NIL	NIL

\*NOTE: EVERY 24HR FORECAST IS VALID UPTO 0300 UTC (0830 IST) OF NEXT DAY

**ARABIAN SEA:**

YESTERDAY'S LOW PRESSURE AREA OVER SOUTHEAST ARABIAN SEA MOVED NORTH-NORTHEASTWARDS AND LAY OVER THE SAME REGION WITH THE ASSOCIATED CYCLONIC CIRCULATION EXTENDING UP TO MID-TROPOSPHERIC LEVELS AT 0300 UTC OF TODAY, 3<sup>RD</sup> JANUARY, 2024. IT IS LIKELY TO MOVE NEARLY NORTHEASTWARDS OVER SOUTHEAST ARABIAN SEA AND ADJOINING LAKSHADWEEP AREA DURING NEXT 24 HOURS. A SOUTHWEST-NORTHEAST ORIENTED TROUGH IN LOWER TROPOSPHERIC LEVELS RUNS FROM THE CENTRE OF LOW PRESSURE AREA TO NORTH KERALA-SOUTH KARNATAKA COASTS.

SCATTERED LOW AND MEDIUM CLOUDS WITH EMBEDDED INTENSE TO VERY INTENSE CONVECTION LAY OVER SOUTHEAST ARABIAN SEA. SCATTERED LOW AND MEDIUM CLOUDS WITH EMBEDDED MODERATE TO INTENSE CONVECTION LAY OVER SOUTHWEST ARABIAN SEA, LAKSHADWEEP ISLAND AREA AND ISOLATED WEAK TO MODERATE CONVECTION LAY OVER EASTCENTRAL ARABIAN SEA & COMORIN AREA.

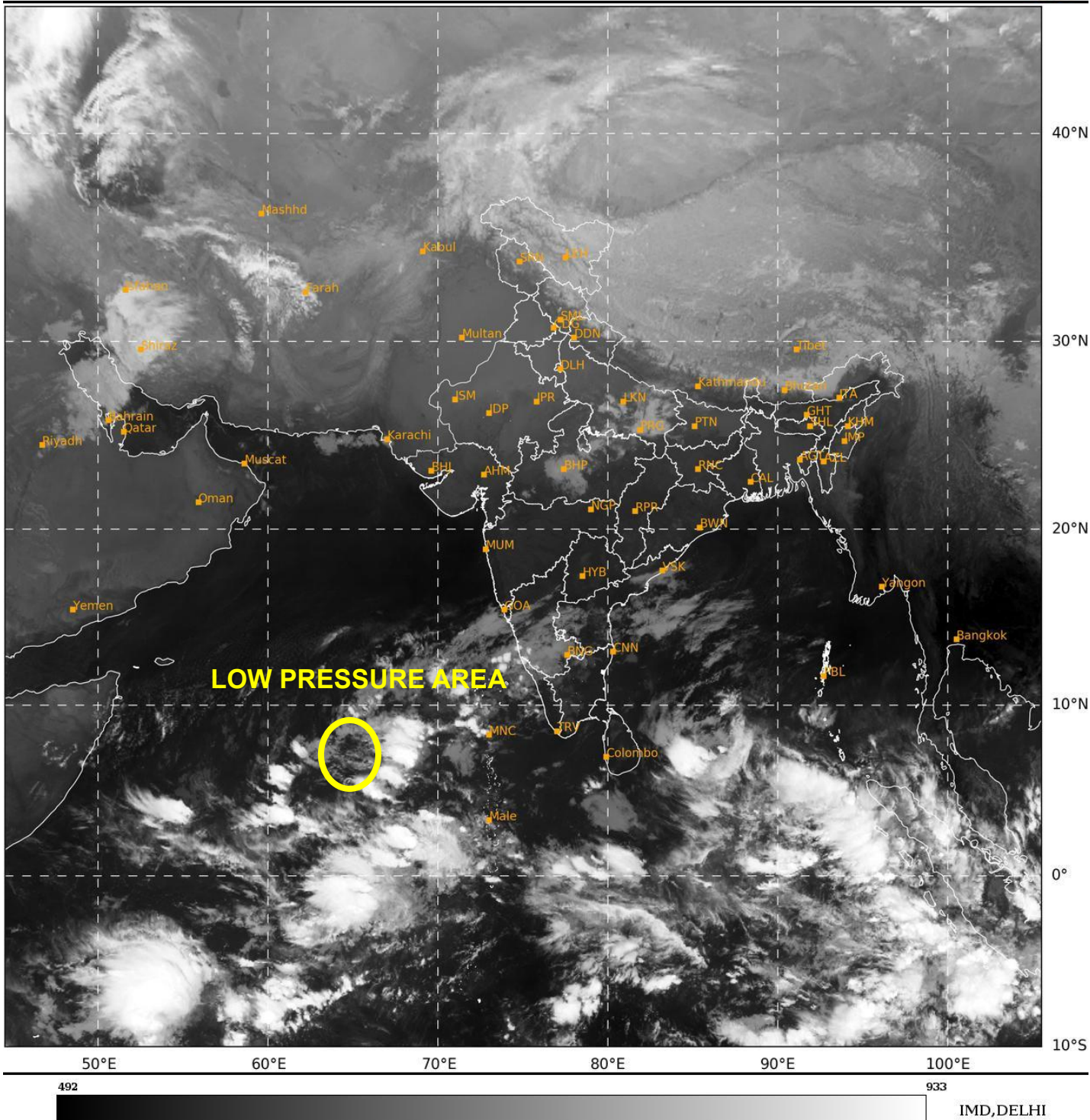
**\*PROBABILITY OF CYCLOGENESIS (FORMATION OF DEPRESSION) DURING NEXT 168 HRS:**

24 HOURS	24-48 HOURS	48-72 HOURS	72-96 HOURS	96-120 HOURS	120-144 HOURS	144-168 HOURS
NIL	NIL	NIL	NIL	NIL	NIL	NIL

\*NOTE: EVERY 24HR FORECAST IS VALID UPTO 0300 UTC (0830 IST) OF NEXT DAY

SAT : INSAT-3D IMG  
IMG\_TIR1 10.8 um  
L1C Mercator

03-01-2024/(0300 to 0327) GMT  
03-01-2024/(0830 to 0857) IST



Cloud distribution: (a) Isolated: <25%, Scattered:25-50%, Broken: 51-75%, Solid:>75%, Convection Intensity: (a) Weak: Cloud Top Temperature (CTT) >-25°C, (b) Moderate: CTT: - 25°C to -40°C, (c) Intense: CTT: - 41°C to -70°C and (d) Very Intense: : Less than -70°C  
PROBABILITY OF CYCLOGENESIS (FORMATION OF DEPRESSION):NIL: 0%, LOW: 1-33%, , MODERATE: 34-66% AND HIGH: 67-100%  
This is a guidance Bulletin for WMO/ESCAP Panel Member countries. Visit respective National websites for Country specific Bulletins